

# DS3

## Electric Pedestrian Stacker 1500KG



- Modern and compact design with exceptional durability
- Wide mast selection up to 3.9 meters elevation
- Stability for medium level stacking
- Integrated charger for charging convenience
- Operation safety assurance



Manufacturer			EP
Model designation			DS3
Drive			Electric
Load capacity	Q	kg	1500
Load center distance	c	mm	600
Service weight			540
Length to face of forks	l2	mm	577
Overall width	b1/b2	mm	834
Fork dimensions	s×e×l	mm	75/170/1150
Turning radius	Wa	mm	1470
Max. gradeability, laden/unladen			3/10
Battery voltage/nominal capacity	V/Ah		24/80

## FEATURE

### ■ Stability for medium level stacking

The DS3 is designed for stability when stacking loads at medium levels. With a maximum lift height of 3.9 meters, the DS3 is ideal for medium-height racks. Thanks to the enhanced mast with dual chains, the DS3 ensures stable and smooth elevation.



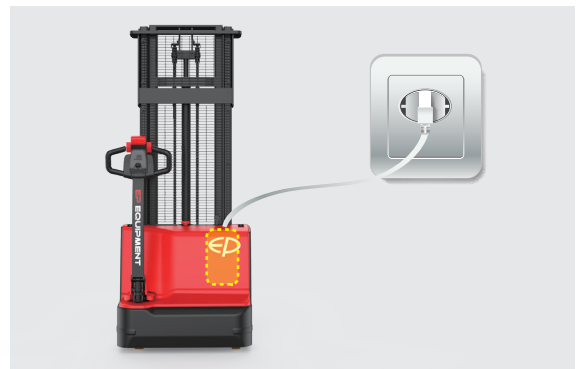
### ■ Modern design with exceptional durability

The DS3 features a sleek and streamlined appearance, similar to the ESA121. Its robust cover also offers great durability in any warehouse or storage environment.



### ■ Integrated charger for charging convenience

The DS3 is equipped with a 24V/10A integrated charger and a 24V/80Ah maintenance-free AGM battery as standard, ensuring both convenience and flexibility in daily operations.



### ■ Operation safety assurance

For safety first, the DS3 comes with speed reduction when elevated as standard to protect operator and the goods. Additionally, the iron mesh guard on the mast acts as a protective barrier against falling objects.

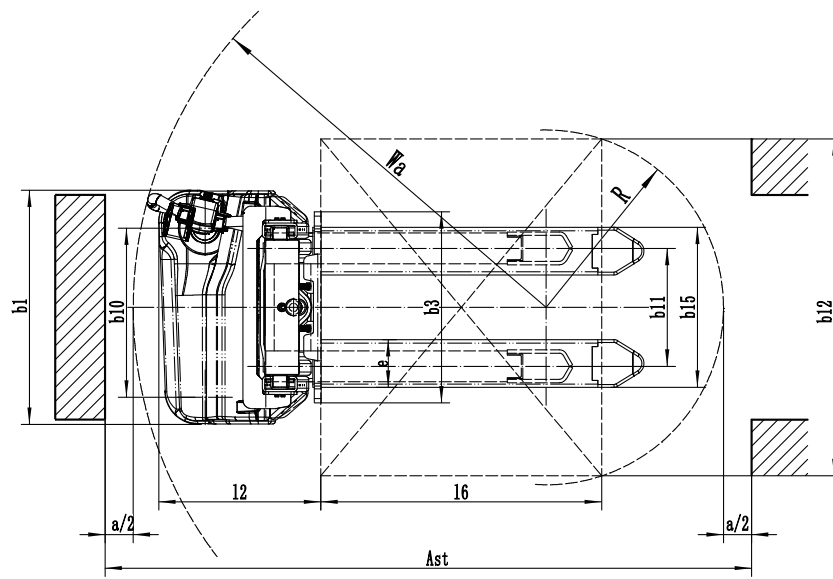
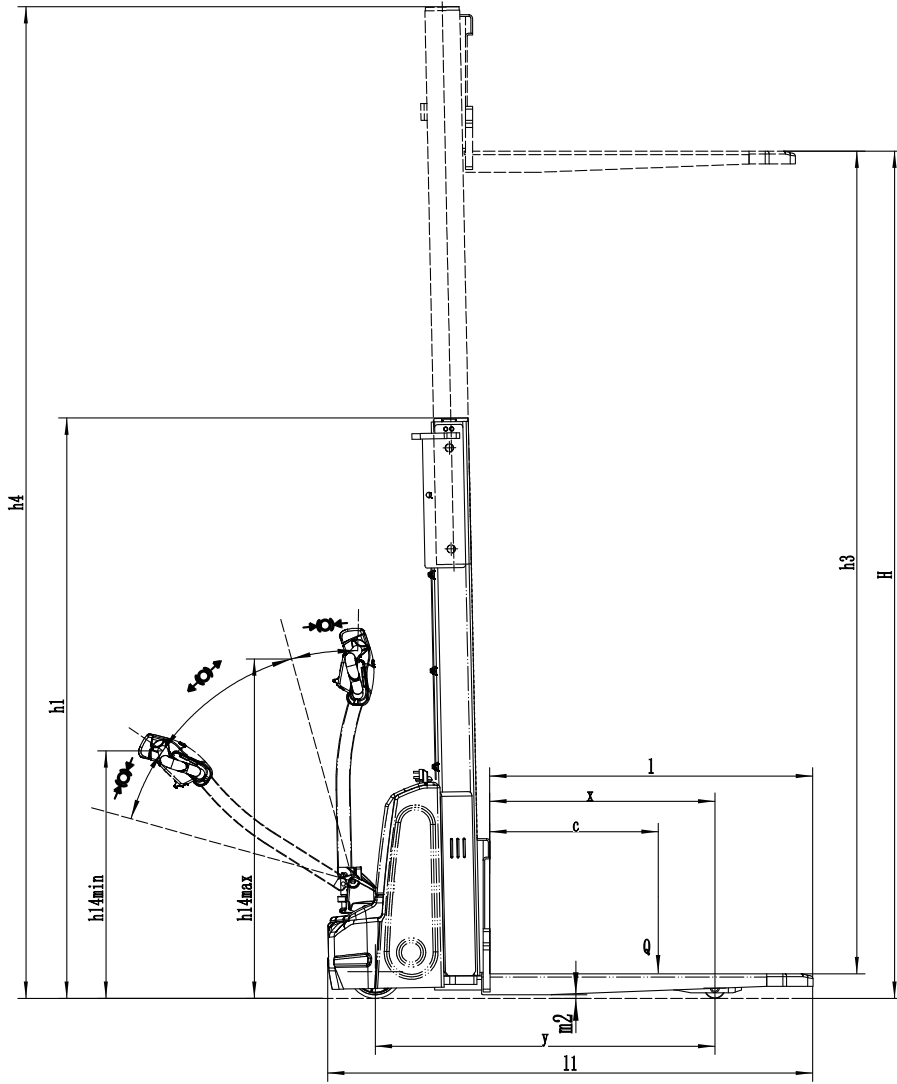


# Electric Pedestrian Stacker 1500KG

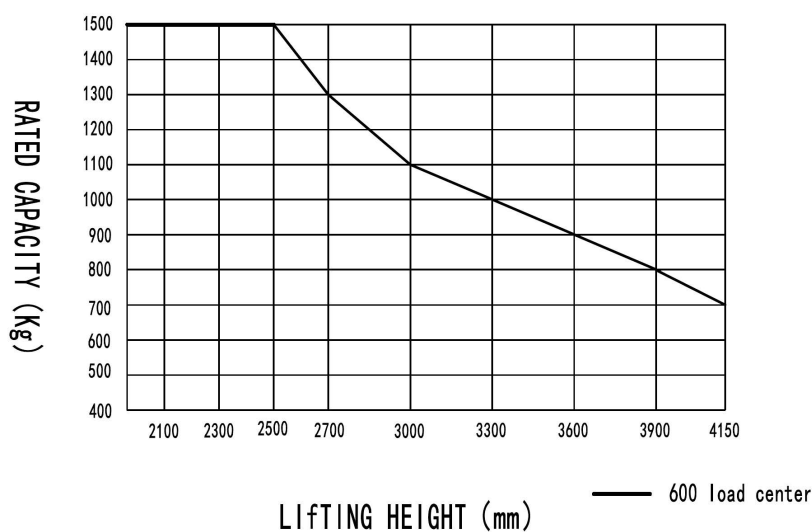
## DS3

Distinguishing mark	1.1	Manufacturer			EP
	1.2	Model designation			DS3
	1.3	Drive			Electric
	1.4	Operator type			Pedestrian
	1.5	Load capacity	Q	kg	1500
	1.6	Load center distance	c	mm	600
	1.8	Load distance, centre of drive axle to fork	x	mm	802
	1.9	Wheelbase	y	mm	1210
	Service weight	2.1	Service weight		kg
2.2		Axle loading, laden front/rear		kg	645/1395
2.3		Axle loading, unladen front/rear		kg	395/145
Tyres/chassis	3.1	Tyre type			Polyurethane
	3.2	Tyre size, front			Ø190×55
	3.3	Tyre size, rear			Ø74×88
	3.4	Additional wheels (castor wheels)		mm	Ø128×50
	3.5	Wheels, number front/rear (x=drive wheels)		mm	1x, 1/2
	3.6.1	Tread width, front	b <sub>10</sub>	mm	597
	3.7.1	Tread width, rear	b <sub>11</sub>	mm	420
	4.0	Max. Lift Height	H	mm	3018
	4.2	Retracted mast height	h <sub>1</sub>	mm	2067
Dimensions	4.4	Lift height	h <sub>3</sub>	mm	2930
	4.5	Height, mast extended	h <sub>4</sub>	mm	3532
	4.9	Height of tiller handle in drive position min./max.	h <sub>14</sub>	mm	760/1140
	4.15	Lowered height	h <sub>13</sub>	mm	90
	4.19	Overall length	l <sub>1</sub>	mm	1727
	4.20	Length to face of forks	l <sub>2</sub>	mm	577
	4.21	Overall width	b <sub>1</sub> /b <sub>2</sub>	mm	834
	4.22	Fork dimensions	s×e×l	mm	75/170/1150
	4.24	Fork carriage width	b <sub>3</sub>	mm	680
	4.25	Fork spread	b <sub>5</sub>	mm	570
	4.32	Ground clearance, center of wheelbase	m <sub>2</sub>	mm	30
	4.34.1	Aisle width for pallets 1000×1200 crossways	Ast	mm	2302
	4.34.2	Aisle width for pallets 800×1200 lengthways	Ast	mm	2235
	4.35	Turning radius	Wa	mm	1470
	Performance data	5.1	Travel speed, laden/unladen		km/h
5.2		Lifting speed, laden/unladen		m/s	0.085/0.13
5.3		Lowering speed, laden/unladen		m/s	0.105/0.085
5.8		Max. gradeability, laden/unladen		%	3/10
5.10		Service brake			Electromagnetic
Electric-engine	6.1	Drive motor rating S2 60 min		kW	0.75
	6.2	Lift motor rating at S3 15%		kW	2.2
	6.4	Battery voltage/nominal capacity		V/Ah	24/80
	6.5	Battery weight		kg	38
	8.1	Type of drive control			DC
Addition data	10.5	Steering design			Mechanical
	10.7	Sound pressure level at the driver's ear		dB(A)	74
	15.1	Charger output current		A	10

If there are improvements of technical parameters or configurations, no further notice will be given.  
The diagram shown may contain non-standard configurations.



# Capacity graph



## Mast Option

### CH Channel Beam

Mast types	Lift height h3+h13	Height, mast lowered h1	Free lift h2	Height, mast extended h4
	mm	mm	mm	mm
2-Standard Mast	2518	1731	—	2946
	2718	1831	—	3146
	3018	1981	—	3446
	3318	2131	—	3746
	3618	2281	—	4046
	3918	2431	—	4346
	4168	2556	—	4596

## Option

Optionele items	DS3
Fork dimension	<ul style="list-style-type: none"> <li>●570*1150○685*1150</li> <li>○570*1000○685*1000</li> <li>○570*1220○685*1220</li> </ul>
Fork lowered height	●90
Fork carriage width	●680mm○795mm
Load wheel type	●Single
Load wheel material	●Polyurethane
Drive wheel material	●Polyurethane
Battery capacity	<ul style="list-style-type: none"> <li>●80Ah (Lead acid)</li> <li>○40Ah (Li-ion)</li> </ul>
Charger	<ul style="list-style-type: none"> <li>●24V-10A internal (Lead acid)</li> <li>○24V-15A internal (Li-ion)</li> </ul>
Battery indicator	●Without hourmeter
Tiller head type	●ET big tiller head
Drive control	●90E○1212E
Castor wheels	●Yes and not customized
Vertical tiller creep speed	●Yes and not customized
Speed reduction with elevated mast	●Yes and not customized
Note:	●Standard ○ Optional - Inconformity